



**M325D MH**  
**M325D LMH**  
 Wheel  
 Material Handlers



	M325D MH	M325D LMH
<b>Cat® C7 Engine with ACERT™ Technology</b>		
Net Power (ISO 9249) at 1800 rpm	140 kW/190 hp	140 kW/190 hp
Operating Weight without tool	30 870 kg	35 260 kg
Maximum Reach	15 670 mm	15 670 mm
Maximum Height	17 140 mm	17 570 mm
Maximum Depth	6420 mm	5790 mm

## M325D MH and M325D LMH Wheeled Material Handlers

*The Cat M325D MH and M325D LMH are specifically designed for the scrap and port handling applications, and incorporate many innovations for excellent performance and durability.*

### Engine

- ✓ The Cat C7 engine with ACERT™ Technology offers better fuel efficiency and reduced wear. ACERT Technology works at the point of combustion to optimize engine performance and provide low exhaust emissions. By combining ACERT Technology with the new Economy Mode, customers can balance the demands of performance and fuel economy to suit their requirements and application. **pg. 4**

### Hydraulics

- ✓ The hydraulic system has been designed to provide reliability and outstanding controllability with increased lifting capacity. The Cat Tool Control System provides enhanced flexibility. The Heavy Lift Mode maximizes lifting performance and maintains excellent stability. **pg. 5**

### Operator Comfort

- ✓ The new cab provides maximum space, wider visibility and easy access to switches. The monitor is a full-color graphical display that allows the operator to understand the machine information easily. **pg. 6**

### Environmentally Responsible Design

- ✓ Quieter operation, lower engine emissions, less fluid disposal and cleaner service can help you meet or exceed worldwide regulations and protect the environment. **pg. 4**

### Elevated Cab

- ✓ The M325D MH and M325D LMH are equipped with a hydraulic cab riser to maximize viewing to all sides of the machine. This hydraulic cab riser offers infinitely variable heights up to 2600 mm of additional height. **pg. 8**

### SmartBoom™

More productive. Faster cycle times for material handling. **pg. 5**

*The M325D MH and M325D LMH use the most sophisticated manufacturing technology to ensure the highest level of manufacturing quality.*

*Excellent control, impressive lift capacity, simplified service and more comfortable operator station increase your productivity and lower your operating costs.*

- ✓ *New feature*



---

### Electronic Control System

- ✓ The compact, full-color, graphical monitor displays machine, maintenance, diagnostic and prognostic information in twenty different languages. The new Economy Mode can also be selected from the monitor. To minimize sun glare, the monitor angle is adjustable.  
**pg. 7**

---

### Structures

The structural components are the backbone of the machine's durability. Caterpillar design and manufacturing techniques assure outstanding durability and service life. Caterpillar booms and sticks are large, welded box-section structures with thick, multi-plate fabrications that resist high stress. Structures are stress relieved, thanks to a heat treatment, to significantly improve structures fatigue strength. Stick options allow you to pick the best match for your material handling job.  
**pg. 9**

---

### Work Tools

- ✓ Orange peel grapples and rehandling clamshell buckets are offered to maximize performance of the M325D MH and M325D LMH.  
**pg. 10**

---

### Service and Maintenance

Fast, easy service has been designed in with extended service intervals, advanced filtration, convenient filter access and user-friendly electronic diagnostics for increased productivity and reduced maintenance costs.  
**pg. 11**

---

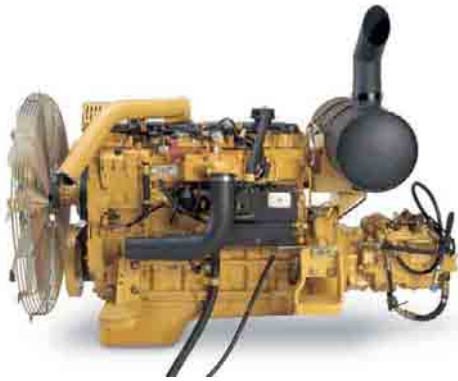
### Complete Customer Service

Your Cat dealer offers a wide range of services that can be set up under a customer support agreement when you purchase your equipment. The dealer will help you choose a plan that can cover everything from machine and attachment selection to replacement.  
**pg. 11**



## Engine

*Built for power, reliability, economy and low emissions.  
Meeting regulations... Exceeding expectations.*



**Performance.** The Cat C7 engine with ACERT Technology offers more engine power, and runs at lower speeds for better fuel efficiency and reduced wear.

### **Automatic Engine Speed Control.**

The two-stage, one-touch control maximizes fuel efficiency and reduces sound levels.

**Engine Controller.** ADEM™ A4 (Advanced Diesel Engine Management) electronic control module manages fuel delivery to get the best performance per liter of fuel. The controller uses sensors in fuel, air intake, exhaust and cooling systems and provides flexible fuel mapping, allowing the engine to respond quickly to varying application needs. It tracks engine and machine conditions while keeping the engine operating at peak efficiency.

**Fuel Delivery.** The Cat C7 features electronic controls that govern the mechanically actuated unit fuel injection system. Multiple injection fuel delivery involves a high degree of precision. Precisely shaping the combustion cycle lowers combustion chamber temperatures, generating fewer emissions and optimizing fuel combustion. This translates into more work output for your fuel cost.

**Cooling System.** To reduce fan noise, the cooling fan is driven from a viscous clutch which is electrically controlled by the machine ECM. It calculates optimum fan speed based on the target engine speed, coolant temperature, hydraulic oil temperature and actual fan speed. The Cat C7 delivers a completely new layout that separates the cooling system from the engine compartment.

**Air Cleaner.** The radial seal air filter features a double-layered filter core for more efficient filtration and is located in a compartment behind the cab. A warning is displayed on the monitor when dust accumulates above a preset level.

## Environmentally Responsible Design

*Caterpillar machines not only help you build a better world, they help maintain and preserve the fragile environment.*



### **Outstanding Performance.**

Many features designed to provide outstanding performance which can mean more work done in a day, less fuel consumption and minimal impact on our environment.

**Emissions.** ACERT Technology is a differentiated technology that reduces emissions at the point of combustion. The technology capitalizes on Caterpillar's proven leadership in three core engine systems: fuel, air and electronics.

**Fewer Leaks and Spills.** Engine oil and encapsulated hydraulic oil filters are positioned vertically and are easy to reach to minimize spillage. Service intervals are extended to reduce the times fluids are changed and handled.

- Hydraulic oil service interval can be extended to 4000 hours with the S•O•S program.
- In addition to the S•O•S program fine filtration system attachment extends the service interval to 5000 hours.
- Cat Extended Life Coolant extends service to 6000 h, less need for fluid disposal.
- The hydraulic system is compatible with Cat HEES hydraulic bio-oil for ecologically sensitive applications.

## Hydraulics

*The M325D MH and M325D LMH hydraulic system is designed to handle the specific requirements of the material handling industry.*

**Pilot System.** The pilot pump is independent from the main pumps and controls the front linkage, swing and travel operations.

**Hydraulic Cross-Sensing System.** It utilizes each of two hydraulic pumps to 100%, under all operating conditions. This improves productivity with faster implement speeds and quicker, stronger pivot turns.

**Boom and Stick Regeneration Circuit.** Saves energy during boom-down and stick-in operation which increases efficiency, reduces cycle times and pressure loss for higher productivity, lower operating costs and increased fuel efficiency.

**Boom and Swing Priority.** The hydraulic system provides automatic priority function for boom-up and swing operations eliminating the need for work mode buttons. When the boom or swing lever is activated, the system automatically assigns priority based on operator demand

**Hydraulic Cylinder Snubbers.** Located at the rod-end of the boom cylinders and both ends of the stick cylinders to cushion shocks while reducing sound levels and extending component life.

**Improved Hydraulic Attachments.** New damping valves, lowering check valves and pressure reducing valves on M325D MH and M325D LMH significantly improve operator comfort and combined movements' smoothness. Machines are less aggressive and cab vibrations are reduced, while providing even more lifting capacity and improved controllability.

**Heavy Lift Mode.** The operator can select the heavy lift mode at the push of a button to boost lifting capability and provide improved controllability of heavy loads.

**Medium Pressure Circuit.** The on/off grapple rotate function on M325C MH/LMH has been replaced by a modular grapple rotate function on M325D MH/LMH with a sliding switch on left joystick to help the operator to precisely position the tool. The grapple open/close function is activated through high pressure circuit on right joystick.



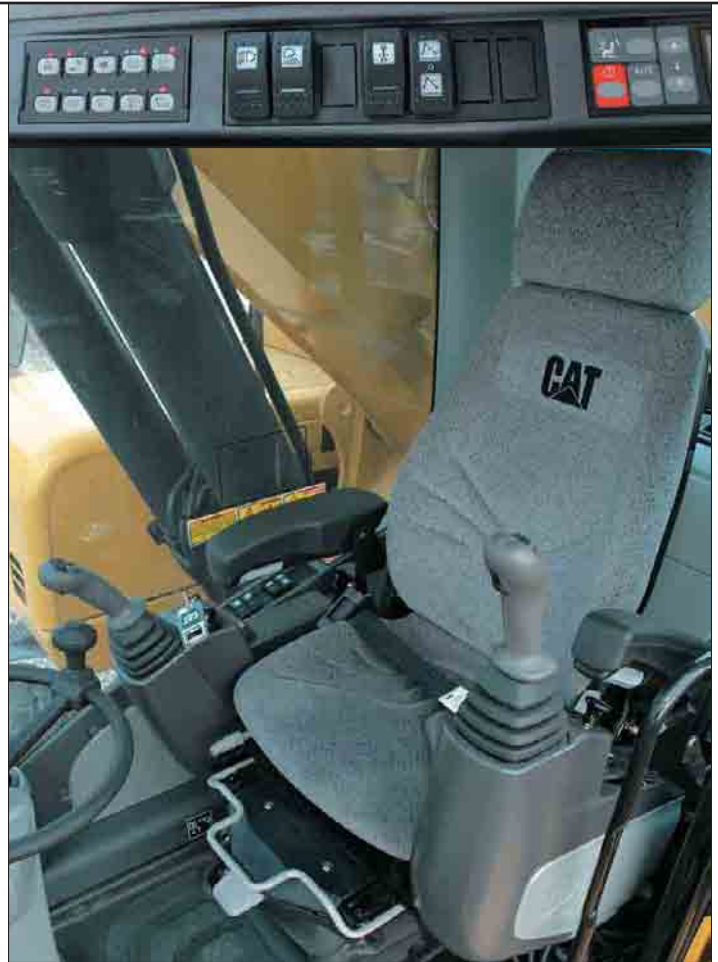
**SmartBoom Feature.** It allows the operator to fully concentrate on production. The unique Cat SmartBoom significantly enhances operator comfort and job efficiency. Loading barges is more productive and more fuel efficient as the return cycle is reduced while the boom down function does not require pump flow. Unloading barges is easier and safer because the SmartBoom avoids excessive force being put on the barge's floor.

**Hydraulic Generator.** The optional generator control circuit and optional generator 20 kW allow the installation of a magnet.



## Operator Station

*Designed for simple, easy operation, high visibility and comfort, the M325D MH and M325D LMH allow the operator to focus on production.*



**Windows and Wipers.** To maximize visibility, all glass is affixed directly to the cab eliminating the use of window frames. Choice of fixed or easy-to-open split front windshield meet operator preference and applications conditions.

- 50/50 split front windshield allows both upper and lower portions to be stored in an overhead position.
- 70/30 split front windshield stores the upper portion above the operator. The lower front windshield features a rounded design to maximize downward visibility and improves wiper coverage.
- Both openable versions feature a one-touch action release system.
- The one-piece fixed front windshield is available in standard heavy duty laminated glass, and offer the optimum visibility.

Parallel wiper system covers almost the complete front window without leaving unwiped areas in the immediate line of sight of the operator.

**Monitor.** The compact, full-color, graphical monitor displays machine, maintenance, diagnostic and prognostic information, in twenty different languages. Monitor angle can be adjusted to minimize sun glare.

**Consoles.** Redesigned consoles feature a simple, functional design to reduce operator fatigue, ease of switch operations and excellent visibility. Both consoles have attached armrests with height adjustments.

**Implement Controls.** Easy to handle joysticks with integrated push buttons and sliding switches control all implement and swing functions. The sliding switches provide modulated control for grapple rotation and hydraulic cab riser activation. They are designed to increase operator comfort and reduce operator fatigue.



## Electronic Control System

*Manages the engine and hydraulics for maximum performance.*

### Standard Equipment.

- For added safety, the tiltable left hand seat console must be in the operate position to activate the machine controls functions.
- The standard and optional seats provide a variety of adjustments to suit operator's size and weight including fore/aft, height and weight. Wide adjustable armrests and a retractable seat belt are also included.
- To enhance operator comfort and productivity, the cab includes a lighter, drink holder, coat hook, service meter, literature holder, magazine rack and storage compartment.
- Air conditioning.
- Climate control: positive filtered ventilation with a pressurized cab. Fresh air or re-circulated air can be selected with a switch on the right console.

### Optional Equipment.

- Air suspension seat.
- The cab can be equipped with 12 V converter and up to two 12 V/7 A electrical sockets to provide additional electrical resources.
- Machine Security System (MSS) is available from the factory. MSS uses special Caterpillar key with an embedded electronic chip for controlling unauthorized machine operation.
- The Product Link provides all kinds of information and working parameters, thanks to a satellite connection between a computer and the machine. Easier fleet management and preventive maintenance.
- Falling object guard on top and front of the cab. The front guard swings out for easier windshield cleaning.



**Monitor Display Screen.** The monitor is a full color 400x234 pixels Liquid Crystal Display (LCD) graphic display. The Master Caution Lamp flashes when one of the critical conditions below occurs:

- Engine oil pressure low
  - Coolant temperature high
  - Hydraulic oil temperature high
- Under normal conditions or the default condition, the monitor display screen is divided into four areas; clock and throttle dial, gauge, event display and multi-information display.

### Clock and Throttle Dial Area.

The clock and the throttle dial position are in this area and the gas-station icon with green color is also displayed.

**Gauge Area.** Three analog gauges, fuel level, hydraulic oil temperature and coolant temperature, are displayed in this area.

### Event Display Area.

Machine information is displayed in this area with the icon and language.

### Multi-information Display Area.

This area is reserved for displaying information that is convenient for the operator. The "CAT" logo mark is displayed when information to display does not exist.

**Keypad.** The keypad allows operator to select machine operation conditions and to set view preferences.



## Elevated Cab

*Hydraulic cab riser is available to maximize viewing to all sides of the machine.*

**Hydraulic Cab Riser.** The new design of the parallelogram hydraulic cab riser offers increased visibility as well as optimized operator comfort thanks to higher, larger and more robust structures. The activation of the hydraulic cab riser is modular, and thus,

allows the operator to control the riser speed and decrease shocks. In case of emergency, the cab can be lowered while using a safety lever either inside the cab or inside the radiator compartment.



**Bottom Position.** The bottom position is used for shipping and travel.



**Medium Position.** The medium position places the cab forward by 500 mm more than in the travel position, for increased visibility.



**Top Position.** The top position raises the cab by 2600 mm. This provides optimal viewing to all sides in different applications such as scrap handling and port handling. The cab can be positioned at any level between lowest and highest positions.

## Cab Access

*The M325D MH and M325D LMH are equipped with a newly designed cab access system.*



**Cab Access System.** The M325D MH and M325D LMH can be equipped with a newly designed cab access system. This cab features an additional cab platform with handrails located to provide the operator with safe ingress and egress.

## Structures

*The M325D MH and M325D LMH structural components are the backbone of the machine's durability. Durable frames absorb stresses and provide excellent stability.*

### **Purpose Designed Upper Structure and Counterweight.**

The upper structure is specifically designed for the scrap and material handling markets. It is built of higher strength material and thicker steel sections to handle the increased swing loads developed with the longer front parts, heavier counterweights and cab risers used in Material Handling.

**Strong and Stable Undercarriage.** The M325D MH and M325D LMH wheeled undercarriages provide maximum rigidity and long service life.

- The hydraulic lines are routed through the frame, and the cylinders have heavy-duty guards to provide protection from damage.
- The front axle on M325D MH and the rear axle on M325D LMH offer great oscillating angles. The transmission is mounted in the center of the undercarriage for protection and optimum ground clearance.
- The M325D MH includes 4 dual 12.00-20 solid rubber tires, and the M325D LMH is equipped with 4 single 16.00-25 solid rubber tires. Optional pneumatic tires are also available.
- Tool boxes are available.

**Material Handling Front Parts.** Select the right combination of front linkage with your Cat dealer to ensure high productivity from the very start of your job. The 3 sets of front parts meet your material handling needs with excellent lift performance and working range when operating in close or at full reach. Built for strong performance and long service life.

### **Efficient Design of Welded Box-section Structures.**

The design with thick, multi-plate fabrications in high stress areas allows structures to flex, dissipating stresses and maximizing strength.

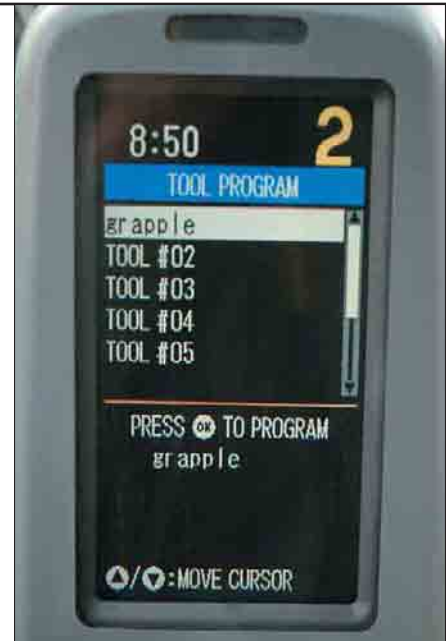
- Finite element analysis is used in the determination of structural stresses and enables optimization of weight, durability and performance.
- Internal baffle plates provide additional strength and durability throughout the structure to withstand torsional loads.
- Robotic welding: up to 95% of the structural welds on a Cat material handler are completed by robots. Robotic welds achieve over three times the penetration of manual welds.
- Stress relieving: M325D LMH booms and sticks are stress relieved, thanks to heat treatment, to maximize strength for greater durability.



## Work Tools – Attachments

A variety of grapples and clamshells are available to maximize machine performance in material handling applications.

			M325D MH		M325D LMH			
			8850 mm		8850 mm			
			6000 mm	7420 mm	5000 mm	6000 mm	7420 mm	
Rehandling Clamshell Buckets	GOS-35	0.62 – 0.7			X			
		0.78			X			
		1.05			X			
		1.26		N	X			
		1.46		N	X			
		1.67		N	X		N	
	GOS-45	0.97			X			
		1.12		N	X			
		1.27		N	X			
		1.58		N	X		N	
		1.71 – 2.02	N	N	X		N	
		2.34	N	N	X	N	N	
Orange Peel Grapples (5 tines)	GSM-35	0.5			X			
		0.6 – 0.8			X			
		1.0		N	X			
	GSM-45	0.6		N	X			
		0.8		N	X			
		1.0		N	X		N	
	GSH20B	1.25	N	N	X		N	
		0.6			X			
		0.8		N	X			
		1.0		N	X			
		GSH22B	0.6		N	X		
			0.8		N	X		N
1.0	N		N	X		N		
Orange Peel Grapples (4 tines)	GSH20B	0.6	N		X			
		0.8			X			
		1.0		N	X			
	GSH22B	0.6		N	X			
		0.8		N	X			
		1.0		N	X		N	
1.25	N	N	X		N			
Multi Grapples	G320B-D, -R	–	X	X		X	X	
Hydraulic Shears	S320	–	X	X		X	X	
Quick Coupler	CW-40, -40S	–	X	X		X	X	



Work tools have been calculated with machine in stability position; over-the-side and at maximum horizontal reach at approximately 2 meters above ground level. When choosing a work tool please consider work tool application, productivity requirements and durability. Refer to work tool specifications for application recommendations and productivity information. Check with your Cat dealer for more details on specifications, sizes and other work tool types.



- Max. material density 3000 kg/m<sup>3</sup>
- Max. material density 1800 kg/m<sup>3</sup>
- Max. material density 1200 kg/m<sup>3</sup>
- N Not recommended
- X Not compatible
- Quick coupler match
- Recommended for restricted working ranges

## Service and Maintenance

*Simplified service and maintenance save you time and money.*



**Extended Service Intervals.** M325D service and maintenance intervals have been extended to reduce machine service time and increase machine availability.

**Air Filter Compartment.** The air filter features a double-element construction for superior cleaning efficiency. When the air cleaner plugs, a warning is displayed on the monitor screen inside the cab.

**Service.** The design and layout was made with the service technician in mind. Many service locations are easily accessible by ascending to the maintenance walkways allowing critical maintenance to get done quickly and efficiently.

**Pump Compartment.** A service door on the right side of the upper structure allows access to the pump and pilot filter.

**Capsule Filter.** The hydraulic return filter, a capsule filter, is situated outside the hydraulic tank. This filter prevents contaminants from entering the system when hydraulic oil is changed and keeps the operation clean.

**Diagnostics and Monitoring.** Equipped with S•O•S<sup>SM</sup> sampling ports and hydraulic test ports for the hydraulic system, engine oil, and for coolant. A test connection for the Electronic Technician (ET) service tool is located behind the cab.

**Anti-Skid Plate.** Anti-skid plate covers top of and maintenance walkways and upper structure to prevent slipping during maintenance.

**Fan Guard.** Engine radiator fan is completely enclosed by fine wire mesh, reducing the risk of an accident.

**Greasing Points.** Concentrated remote greasing blocks deliver grease to hard-to-reach locations on the Material Handlers.

**Radiator Compartment.** The left rear service door allows easy access to the engine radiator, oil cooler and air-to-air aftercooler. Reserve tank and drain cock are attached to the radiator for simplified maintenance.

## Complete Customer Support

*Cat dealer services help you operate longer with lower costs.*



**Machine Selection.** Make detailed comparisons of the machines you are considering before you buy. What are the job requirements, machine attachments and operating hours? What production is needed? Your Cat dealer can provide recommendations.

**Purchase.** Consider the financing options available as well as day-to-day operating costs. This is also the time to look at dealer services that can be included in the cost of the machine to yield lower equipment owning and operating costs over the long run.

### **Customer Support Agreements.**

Cat dealers offer a variety of product support agreements, and work with customers to develop a plan that best meets specific needs. These plans can cover the entire machine, including attachments, to help protect the customer's investment.

**Operation.** Improving operating techniques can boost your profits. Your cat dealer has videotapes, literature and other ideas to help you increase productivity, and Caterpillar offers certified operator training classes to help maximize the return on your investment.

**Product Support.** You will find nearly all parts at our dealer parts counter. Cat dealers utilize a worldwide computer network to find in-stock parts to minimize machine downtime. You can save money with Cat remanufactured components.

**Maintenance Services.** Repair option programs guarantee the cost of repairs up front. Diagnostic programs such as Scheduled Oil Sampling, Coolant Sampling and Technical Analysis help you avoid unscheduled repairs.

**Replacement.** Repair, rebuild or replace? Your Cat dealer can help you evaluate the cost involved so you can make the right choice.

## Engine

Cat C7 Engine with ACERT Technology

Net power at 1800 rpm

ISO 9249	140 kW/190 hp
80/1269/EEC	140 kW/190 hp

Bore 110 mm

Stroke 127 mm

Displacement 7.2 liters

- All engine horsepower (hp) are metric including front page.
- The C7 engine meets Stage IIIA emission requirements.
- Net power advertised is the power available at the flywheel when the engine is equipped with fan, air cleaner, muffler, and alternator.
- Full engine net power up to 2300 m altitude

## Service Refill Capacities

	Liter
Fuel tank capacity	520
Cooling system	30
Engine oil	30
Rear axle housing	19
Front steering axle	24
Final drive	2.5
Powershift transmission	2.9
Hydraulic system (including tank)	310

## Weights

	M325D MH	M325D LMH
	kg	kg
Boom	3730	3925
Sticks		
5000 mm	–	1200
6000 mm	1290	1390
7420 mm	1510	1650
Upper structure	8750	8750
Undercarriage	11 080	13 240
Counterweight	5800	7700
Operating weights without tool		
5000 mm stick		
with solid rubber tires	–	35 560
with pneumatic tires	–	34 680
6000 mm stick		
with solid rubber tires	30 650	35 000
with pneumatic tires	29 550	34 120
7420 mm stick		
with solid rubber tires	30 870	35 260
with pneumatic tires	29 770	34 380

## Hydraulic System

Main System

Maximum flow 2 x 235 l/min

Maximum pressure

Normal 350 bar

Heavy lift 360 bar

Travel 350 bar

Swing 275 bar

Pilot System

Maximum flow 32.4 l/min

Maximum pressure 39 bar

## Transmission

	M325D MH	M325D LMH
Maximum travel speed	20 km/h	18 km/h
Drawbar pull	149 kN	167 kN

## Swing Mechanism

Swing speed 8.5 rpm

Swing torque 78 kNm

Maximum pressure 260 bar

## Tires

	M325D MH	M325D LMH
Standard	Dual	Single
Solid Rubber	12.00-20	16.00-25
Optional	Dual	Single
Pneumatic	11.00-20	23.5 R 25

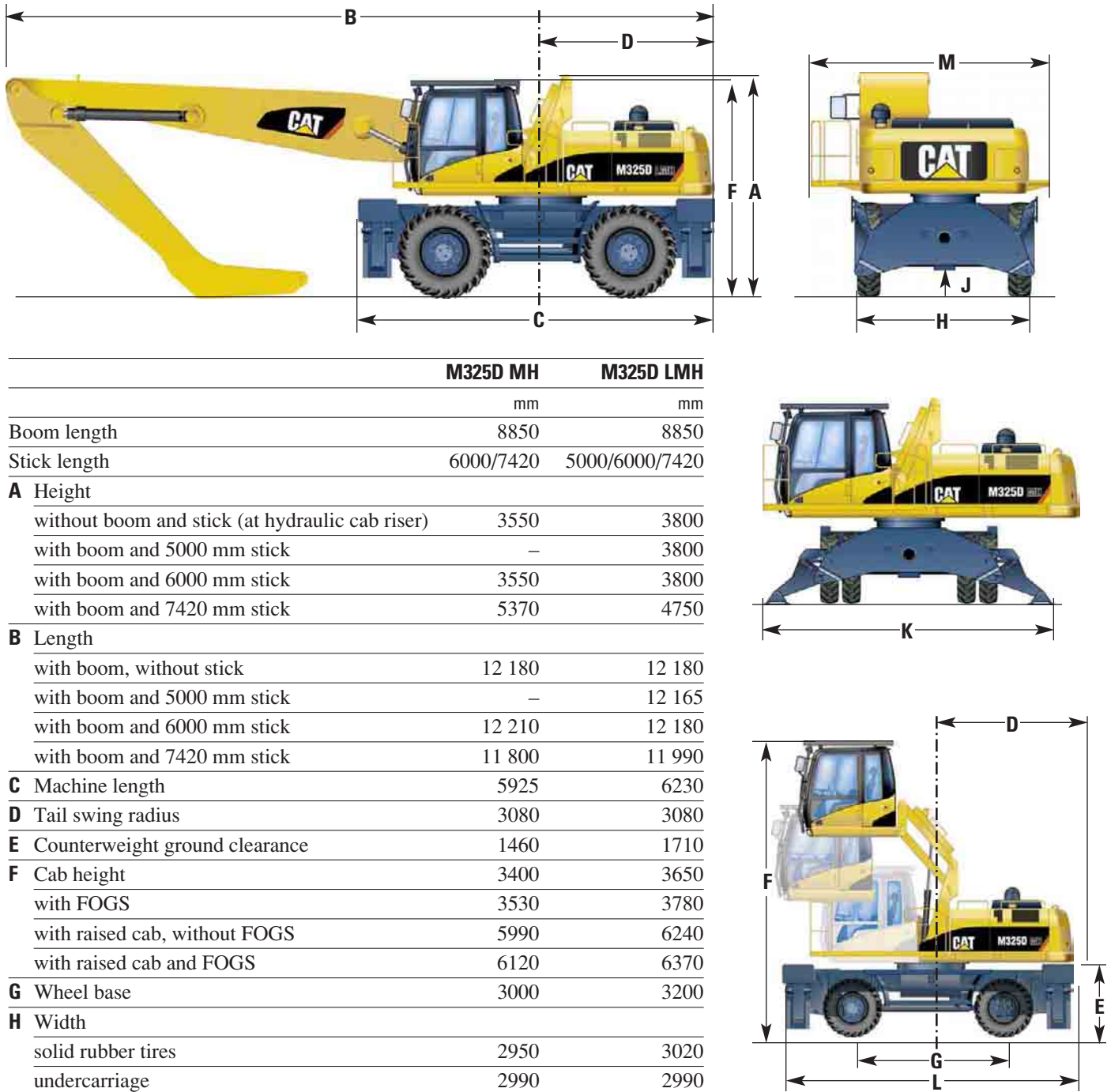
## Sound Levels

**Operator Sound.** The operator sound level measured according to the procedures specified in ISO 6394:1998 is 76 dB(A), for cab offered by Caterpillar, when properly installed and maintained and tested with the doors and windows closed. Hearing protection may be needed when operating with an open operator station and cab (when not properly maintained or doors/windows open) for extended periods or in noisy environment.

**Exterior Sound.** The labeled spectator sound power level measured according to the test procedures and conditions specified in 2000/14/EC is 104 dB(A).

# Dimensions

All dimensions are approximate.



	M325D MH	M325D LMH
	mm	mm
Boom length	8850	8850
Stick length	6000/7420	5000/6000/7420
<b>A</b> Height		
without boom and stick (at hydraulic cab riser)	3550	3800
with boom and 5000 mm stick	–	3800
with boom and 6000 mm stick	3550	3800
with boom and 7420 mm stick	5370	4750
<b>B</b> Length		
with boom, without stick	12 180	12 180
with boom and 5000 mm stick	–	12 165
with boom and 6000 mm stick	12 210	12 180
with boom and 7420 mm stick	11 800	11 990
<b>C</b> Machine length	5925	6230
<b>D</b> Tail swing radius	3080	3080
<b>E</b> Counterweight ground clearance	1460	1710
<b>F</b> Cab height	3400	3650
with FOGS	3530	3780
with raised cab, without FOGS	5990	6240
with raised cab and FOGS	6120	6370
<b>G</b> Wheel base	3000	3200
<b>H</b> Width		
solid rubber tires	2950	3020
undercarriage	2990	2990
without steps, pads, handrails, platform*	3020	3035
with steps	3020	3140
with steps and pads	3275	3230
<b>J</b> Ground clearance	250	270
<b>K</b> Width with stabilizers on ground	4865	5240
<b>L</b> Undercarriage length	5805	6230
<b>M</b> Upper structure width		
with walkways	3740	3740
with walkways and platform	4020	4020

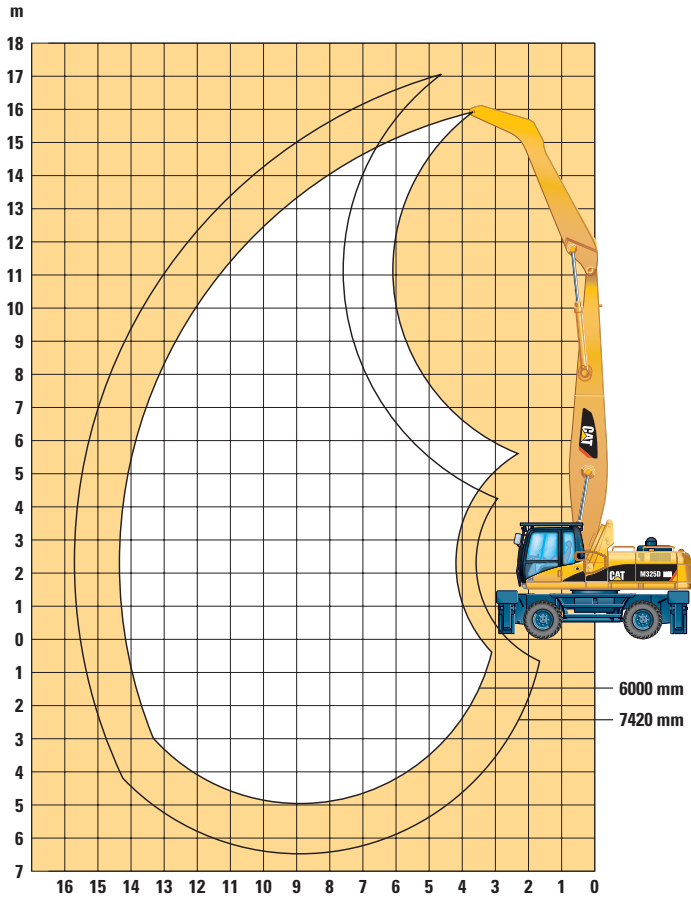
\* Minimum shipping dimension

## Cab

Cab/FOGS meets ISO 10262.

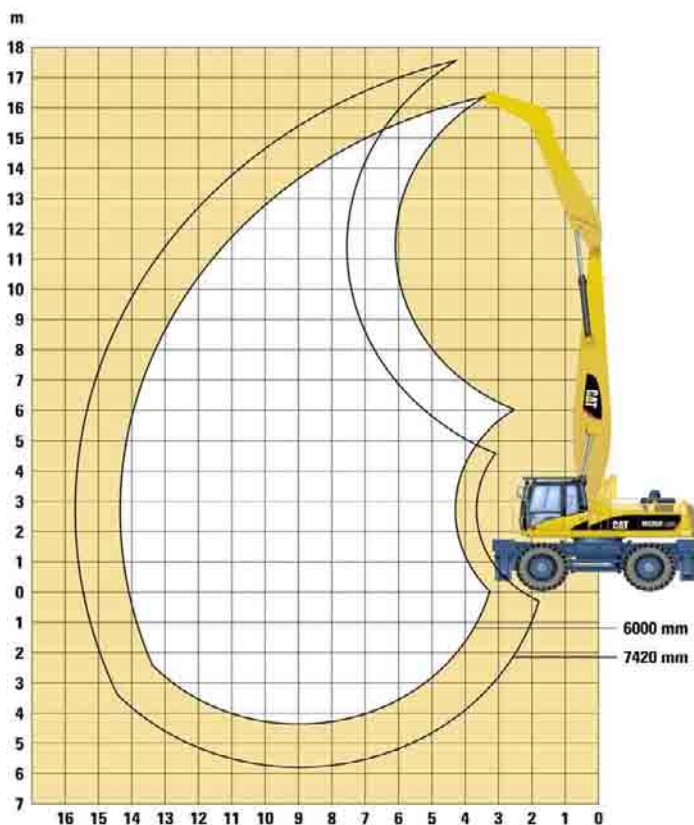
# Working Ranges

**M325D MH** with 6000 mm and 7420 mm sticks.



	mm
Boom length	8850
Stick length	<b>6000</b>
Maximum horizontal reach	14 330
Maximum height	15 990
Maximum depth	5000
Stick length	<b>7420</b>
Maximum horizontal reach	15 670
Maximum height	17 140
Maximum depth	6420

**M325D LMH** with 6000 mm and 7420 mm sticks.

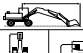


	mm
Boom length	8850
Stick length	<b>6000</b>
Maximum horizontal reach	14 340
Maximum height	16 380
Maximum depth	4370
Stick length	<b>7420</b>
Maximum horizontal reach	15 670
Maximum height	17 570
Maximum depth	5790

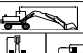
# M325D MH – Lift Capacities

Heavy lift mode. All weights are in kg.

**Boom:** 8850 mm – **Stick:** 6000 mm – **Maximum Reach / Height / Depth:** 14 330 / 15 990 / 5000 mm

Reach	Undercarriage configuration	3.0 m		4.5 m		6.0 m		7.5 m		9.0 m		10.5 m		12.0 m		13.5 m		15.0 m				m		
		Upright	Horizontal	Upright	Horizontal	Upright	Horizontal	Upright	Horizontal	Upright	Horizontal	Upright	Horizontal	Upright	Horizontal	Upright	Horizontal	Upright	Horizontal	Upright	Horizontal			
15.0 m	Stabilizers up					*5930	*5930														*5290	*5290	6.48	
	Stabilizers down					*6130	*6130															*5180	*5180	6.74
13.5 m	Stabilizers up					*7330	*7330	*6210	5400													*4470	3980	8.87
	Stabilizers down					*7400	*7400	*6340	*6340	*4500	*4500											*4420	*4420	9.04
12.0 m	Stabilizers up							7080	5530	5210	4040	3920	2990									3910	2980	10.52
	Stabilizers down							*7380	*7380	*6290	*6290	*4350	*4350									*4050	*4050	10.65
10.5 m	Stabilizers up							7080	5540	5240	4070	4000	3060									3220	2420	11.75
	Stabilizers down							*7730	*7730	*6930	*6930	*6020	*6020									*3850	*3850	11.85
9.0 m	Stabilizers up					*9030	7770	6970	5430	5180	4010	3980	3050	3120	2340							2790	2070	12.68
	Stabilizers down					*9070	*9070	*7880	*7880	*7000	*7000	*6300	6240	*5280	4970							*3740	*3740	12.75
7.5 m	Stabilizers up					*9550	7460	6760	5230	5040	3880	3900	2970	3090	2310							2500	1830	13.38
	Stabilizers down					*9610	*9610	*8200	*8200	*7180	*7180	*6380	6150	*5720	4930							*3700	*3700	13.43
6.0 m	Stabilizers up					*12760	10900	9140	6970	6450	4940	4840	3690	3780	2850	3020	2240	1770				2310	1670	13.88
	Stabilizers down					*13210	*13210	*10400	*10400	*8640	*8640	*7420	*7420	*6500	6010	*5750	4860	*4830	4000			*3720	3720	13.92
4.5 m	Stabilizers up					*13180	9620	8460	6340	6060	4570	4610	3460	3630	2710	2930	2150	2390	1730			2180	1560	14.20
	Stabilizers down					*15040	*15040	*11280	*11280	*9110	*9110	*7660	7410	*6610	5840	*5770	4760	4810	3950			*3780	3630	14.22
3.0 m	Stabilizers up					*9240	8220	7730	5660	5650	4180	4350	3220	3470	2550	2820	2050	2330	1670			2100	1490	14.36
	Stabilizers down					*8110	*8110	*11960	*11960	*9460	9370	*7830	7130	*6660	5670	4650	4740	3890				*3900	3530	14.37
1.5 m	Stabilizers up					*4180	*4180	7130	5100	5290	3840	4120	3000	3320	2410	2730	1960	2280	1620			2070	1460	14.36
	Stabilizers down					*4070	*4070	*12090	*12090	*9540	8970	*7840	6880	*6610	5510	5560	4540	4680	3830			*4070	3500	14.35
0.0 m	Stabilizers up					*3870	*3870	6740	4740	5020	3580	3940	2830	3190	2290	2650	1880	2240	1580			2080	1460	14.20
	Stabilizers down					*3900	*3900	*9160	*9160	*9270	8670	*7620	6680	*6380	5380	*5350	4460	*4370	3790			*3830	3540	14.18
-1.5 m	Stabilizers up					*4410	*4410	6550	4560	4850	3430	3820	2710	3110	2210	2600	1830	2220	1560			2140	1500	13.87
	Stabilizers down					*4470	*4470	*8250	*8250	*8580	8500	*7110	6550	*5930	5290	*4890	4410	*3790	3770			*3470	*3470	13.84
-3.0 m	Stabilizers up					*5170	*5170	6510	4520	4790	3360	3760	2650	3070	2170	2580	1820					2260	1590	13.37
	Stabilizers down							*8430	*8430	*7500	*7500	*6280	*6280	*5200	*5200	*4150	*4150							
-4.5 m	Stabilizers up									4800	3380	3760	2660	3080	2180									
	Stabilizers down									*6010	*6010	*5080	*5080	*4120	*4120									

**Boom:** 8850 mm – **Stick:** 7420 mm – **Maximum Reach / Height / Depth:** 15 670 / 17 140 / 6420 mm

Reach	Undercarriage configuration	3.0 m		4.5 m		6.0 m		7.5 m		9.0 m		10.5 m		12.0 m		13.5 m		15.0 m				m			
		Upright	Horizontal	Upright	Horizontal	Upright	Horizontal	Upright	Horizontal	Upright	Horizontal	Upright	Horizontal	Upright	Horizontal	Upright	Horizontal	Upright	Horizontal	Upright	Horizontal				
16.5 m	Stabilizers up					*4960	*4960															*4520	*4520	6.43	
	Stabilizers down					*5120	*5120																*4410	*4410	6.73
15.0 m	Stabilizers up							*5160	*5160	*3810	*3810												*3690	*3690	9.09
	Stabilizers down							*5250	*5250	*3980	*3980												*3640	*3640	9.28
13.5 m	Stabilizers up							*5900	5810	*5110	4230	*3840	3130										*3300	2870	10.92
	Stabilizers down							*5940	*5940	*5180	*5180	*3970	*3970										*3270	*3270	11.06
12.0 m	Stabilizers up									5500	4320	4180	3230	3220	2430								3050	2290	12.29
	Stabilizers down									*5850	*5850	*5020	*5020	*3630	*3630								*3060	*3060	12.40
10.5 m	Stabilizers up									5510	4320	4200	3250	3270	2480								2600	1920	13.36
	Stabilizers down									*6280	*6280	*5740	*5740	*4690	*4690								*2940	*2940	13.44
9.0 m	Stabilizers up							*7020	5790	5430	4250	4160	3210	3250	2470	2570	1900					2300	1670	14.18	
	Stabilizers down							*7040	*7040	*6370	*6370	*5820	*5820	*5340	5120	*4000	*4000					*2860	*2860	14.25	
7.5 m	Stabilizers up									7150	5590	5290	4110	4060	3120	3190	2410	2540	1870				2090	1490	14.81
	Stabilizers down									*7370	*7370	*6580	*6580	*5940	*5940	*5390	5060	*4820	4120				*2840	*2840	14.86
6.0 m	Stabilizers up							*8490	7590	6830	5290	5070	3900	3920	2980	3100	2320	2490	1820	2010	1420		1930	1360	15.26
	Stabilizers down							*8650	*8650	*7840	*7840	*6860	*6860	*6100	*6100	*5470	4950	*4920	4060	*3430	3370	*2840	*2840	15.30	
4.5 m	Stabilizers up																								
	Stabilizers down																								
3.0 m	Stabilizers up																								
	Stabilizers down																								
1.5 m	Stabilizers up																								
	Stabilizers down																								
0.0 m	Stabilizers up																								
	Stabilizers down																								
-1.5 m	Stabilizers up																								
	Stabilizers down																								
-3.0 m	Stabilizers up																								
	Stabilizers down																								
-4.5 m	Stabilizers up																								
	Stabilizers down																								
-6.0 m	Stabilizers up																								
	Stabilizers down																								

# M325D LMH – Lift Capacities

Heavy lift mode. All weights are in kg.

**Boom:** 8850 mm – **Stick:** 6000 mm – **Maximum Reach / Height / Depth:** 14 340 / 16 380 / 4370 mm

Reach	Undercarriage configuration	3.0 m		4.5 m		6.0 m		7.5 m		9.0 m		10.5 m		12.0 m		13.5 m		15.0 m		m				
		Up	Down	Up	Down	Up	Down	Up	Down	Up	Down	Up	Down	Up	Down	Up	Down	Up	Down	Up	Down	Max		
16.5 m	Stabilizers up Stabilizers down																				*8210	*8210	3.69	
15.0 m	Stabilizers up Stabilizers down					*7400	*7400															*6160	*6160	6.87
						*7740	*7740															*5950	*5950	7.33
13.5 m	Stabilizers up Stabilizers down					*8780	*8780	*7580	7340	*5540	5390											*5310	5260	9.12
						*8930	*8930	*7830	*7830	*6010	*6010											*5210	*5210	9.43
12.0 m	Stabilizers up Stabilizers down					*9510	*9510	*8770	7460	7110	5530	*5320	4210									*4890	4060	10.70
						*9620	*9620	*8920	*8920	*7760	*7760	*5740	*5740									*4840	*4840	10.92
10.5 m	Stabilizers up Stabilizers down					*10140	*10140	*8920	7440	7120	5550	5520	4260									4430	3380	11.87
						*10170	*10170	*8940	*8940	*8020	*8020	*7290	*7290	*4760	*4760							*4640	*4640	12.05
9.0 m	Stabilizers up Stabilizers down					*10470	10370	*9120	7310	7040	5470	5480	4230	4370	3330							3900	2950	12.77
						*10560	*10560	*9180	*9180	*8140	*8140	*7320	*7320	*6610	*6610							*4540	*4540	12.90
7.5 m	Stabilizers up Stabilizers down			*11770	*11770	*11140	9990	9160	7070	6880	5310	5390	4140	4320	3290							3550	2660	13.43
				*12170	*12170	*11290	*11290	*9600	*9600	*8380	*8380	*7440	*7440	*6660	*6660	*4600	*4600					*4510	*4510	13.53
6.0 m	Stabilizers up Stabilizers down	*13610	*13610	*15380	14660	*12090	9410	8790	6730	6650	5100	5240	4000	4240	3210	3490	2610					3310	2460	13.91
		*15880	*15880	*15750	*15750	*12270	*12270	*10140	*10140	*8670	*8670	*7580	*7580	*6700	6660	*5900	5480					*4550	*4550	13.97
4.5 m	Stabilizers up Stabilizers down			*17550	13160	11640	8690	8350	6310	6380	4840	5070	3840	4140	3110	3430	2550					3160	2330	14.20
				*17900	*17900	*13310	*13310	*10680	*10680	*8960	*8960	*7710	*7710	*6720	6480	*5840	5420					*4650	*4650	14.24
3.0 m	Stabilizers up Stabilizers down			*9080	*9080	10830	7940	7890	5890	6100	4580	4890	3670	4020	3000	3370	2490					3070	2260	14.33
				*7560	*7560	*14000	*14000	*11050	*11050	*9130	*9130	*7760	7730	*6670	6360	*5700	5350					*4810	*4810	14.34
1.5 m	Stabilizers up Stabilizers down			*4950	*4950	10180	7340	7500	5520	5850	4340	4730	3510	3920	2900	3310	2430					3040	2230	14.31
				*4810	*4810	*13990	*13990	*11070	*11070	*9100	*9100	*7650	7560	*6500	6250	*5440	5290					*4790	*4790	14.29
0.0 m	Stabilizers up Stabilizers down			*4850	*4850	9780	6980	7220	5250	5660	4150	4600	3390	3840	2820	3260	2390					3070	2250	14.12
				*4950	*4950	*10770	*10770	*10650	*10650	*8780	*8780	*7340	*7340	*6150	*6150	*4980	*4980					*4440	*4440	14.07
-1.5 m	Stabilizers up Stabilizers down			*5580	*5580	9600	6810	7050	5100	5530	4030	4510	3300	3780	2770	3250	2370					3170	2320	13.76
				*5740	*5740	*10130	*10130	*9760	*9760	*8110	*8110	*6760	*6760	*5550	*5550	*4220	*4220					*4010	*4010	13.68
-3.0 m	Stabilizers up Stabilizers down					9570	6780	6990	5040	5480	3980	4480	3270	3770	2760									
						*9820	*9820	*8400	*8400	*7060	*7060	*5830	*5830	*4600	*4600									

**Boom:** 8850 mm – **Stick:** 7420 mm – **Maximum Reach / Height / Depth:** 15 670 / 17 570 / 5790 mm

Reach	Undercarriage configuration	3.0 m		4.5 m		6.0 m		7.5 m		9.0 m		10.5 m		12.0 m		13.5 m		15.0 m		m					
		Up	Down	Up	Down	Up	Down	Up	Down	Up	Down	Up	Down	Up	Down	Up	Down	Up	Down	Up	Down	Max			
16.5 m	Stabilizers up Stabilizers down					*6170	*6170															*5230	*5230	6.86	
						*6440	*6440																*5020	*5020	7.37
15.0 m	Stabilizers up Stabilizers down							*6260	*6260	*4850	*4850												*4370	*4370	9.36
								*6440	*6440	*5170	*5170												*4280	*4280	9.70
13.5 m	Stabilizers up Stabilizers down							*7040	*7040	*6180	5750	*4800	4360										*3950	3890	11.11
								*7140	*7140	*6330	*6330	*5060	*5060										*3900	*3900	11.36
12.0 m	Stabilizers up Stabilizers down							*7530	*7530	*6940	5830	5720	4450	*4400	3440								*3710	3190	12.43
								*7600	*7600	*7050	*7050	*6150	*6150	*4650	*4650								*3680	*3680	12.63
10.5 m	Stabilizers up Stabilizers down							*7920	7830	*7250	5810	5730	4460	4530	3480								*3570	2740	13.46
								*7940	*7940	*7260	*7260	*6680	*6680	*5770	*5770	*3760	*3760						*3550	*3550	13.61
9.0 m	Stabilizers up Stabilizers down							*8120	7710	7320	5720	5670	4400	4500	3460	3630	2740						3260	2430	14.25
								*8180	*8180	*7410	*7410	*6760	*6760	*6200	*6200	*4980	*4980						*3480	*3480	14.37
7.5 m	Stabilizers up Stabilizers down							*8520	7470	7150	5560	5550	4290	4430	3380	3590	2700						2990	2210	14.85
						*9030	*9030	*8610	*8610	*7670	*7670	*6920	*6920	*6280	*6280	*5710	5610						*3460	*3460	14.94
6.0 m	Stabilizers up Stabilizers down					*10340	10100	*9090	7110	6900	5320	5380	4130	4320	3280	3530	2640	2910	2140				2810	2050	15.28
						*10780	*10780	*9200	*9200	*8030	*8030	*7120	*7120	*6380	*6380	*5730	5530	*4250	*4250				*3490	*3490	15.33
4.5 m	Stabilizers up Stabilizers down			*13670	*13670	*11800	9350	8730	6660	6590	5030	5180	3930	4190	3150	3440	2560	2870	2090				2680	1950	15.55
				*15510	*15510	*12010	*12010	*9880	*9880	*8410	*8410	*7330	*7330	*6480	*6480	*5750	5440	*4900	4600				*3550	*3550	15.58
3.0 m	Stabilizers up Stabilizers down			*17420	12860	11440	8480	8200	6160	6260	4710	4960	3720	4040	3010	3350	2470	2810	2040				2610	1880	15.67
				*17740	*17740	*13120	*13120	*10470	*10470	*8740	*8740	*7500	*7500	*6530	6380	*5720	5340	*4930	4540				*3660	*3660	15.67
1.5 m	Stabilizers up Stabilizers down			*10150	*10150	10560	7680	7680	5680	5930	4400	4750	3520	3900	2870	3250	2380	2760	1990				2580	1850	15.64
				*8790	*8790	*13750	*13750	*10830	*10830	*8920	*8920	*7560	*7560	*6500	6230	*5610	5240	*4730	4480				*3810	*3810	15.62
0.0 m	Stabilizers up Stabilizers down	*2690	*2690	*6270	*6270	9900	7070	7270	5290	5660	4140	4560	3340	3770	2750	3170	2300	2710	1940				2590	1850	15.47
		*2790	*2790	*6090	*6090	*13690	*13690	*10810	*10810	*8870	*8870	*7450	7390	*6340	6100	*5370	5160	*4380	*4380				*4020	*4020	15.43
-1.5 m	Stabilizers up Stabilizers down	*3390	*3390	*5860	*5860	9500	6700	6980	5010	5450	3950	4420	3200	3670	2660	3110	2240	2690	1920				2650	1900	15.15
		*3520	*3520	*5890	*5890	*11360	*11360	*10360	*10360	*8520	*8520	*7120	*7120	*5990	*5990	*4960	*4960	*3790	*3790				*3710	*3710	15.08
-3.0 m	Stabilizers up Stabilizers down			*6190	*6190	9300	6530	6810	4860	5320	3820	4320	3110	3610	2600	3080	2210						2770	1990	14.66
				*6280	*6280	*10480	*10480	*9450	*9450	*7830	*7830	*6520	*6520	*5390	*5390	*4280	*4280						*3320	*3320	14.56
-4.5 m	Stabilizers up Stabilizers down					9260	6490	6750	4800	5260	3770	4290	3080	3600	2580										
						*9640	*9640	*8080	*8080	*6750	*6750	*5580	*5580	*4470	*4470										

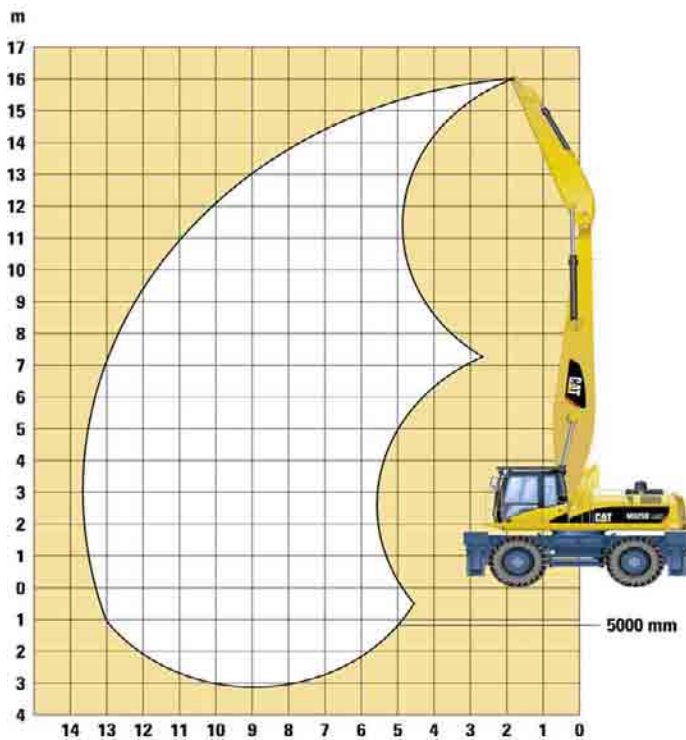


\* Limited by hydraulic rather than tipping load.

The above loads are in compliance with hydraulic excavator lift capacity ratings standard ISO 10567, they do not exceed 87% of hydraulic lifting capacity or 75% of tipping capacity. Weight of all tools and lifting accessories must be deducted from the above lifting capacities.

# Working Ranges

M325D LMH with 5000 mm stick.




	mm
Boom length	8850
Stick length	<b>5000</b>
Maximum horizontal reach	13 670
Maximum height	16 190
Maximum depth	3110

## M325D LMH – Lift Capacities

Heavy lift mode. All weights are in kg.

**Boom:** 8850 mm – **Stick:** 5000 mm – **Maximum Reach / Height / Depth:** 13 670 / 16 190 / 3110 mm

m	Undercarriage configuration	3.0 m		4.5 m		6.0 m		7.5 m		9.0 m		10.5 m		12.0 m		13.5 m		15.0 m				m			
		Stabilizers up	Stabilizers down	Stabilizers up	Stabilizers down	Stabilizers up	Stabilizers down	Stabilizers up	Stabilizers down	Stabilizers up	Stabilizers down	Stabilizers up	Stabilizers down	Stabilizers up	Stabilizers down	Stabilizers up	Stabilizers down	Stabilizers up	Stabilizers down	Stabilizers up	Stabilizers down				
15.0 m	Stabilizers up			*10580	*10580															*8950	*8950	5.35			
	Stabilizers down			*10940	*10940																*8430	*8430	5.93		
13.5 m	Stabilizers up			*11670	*11670	*10480	9840	*8400	6760												*7010	5940	8.04		
	Stabilizers down			*11750	*11750	*10690	*10690	*8900	*8900													*6820	*6820	8.39	
12.0 m	Stabilizers up					*10690	10030	9100	6980	6660	5080											5680	4290	9.80	
	Stabilizers down					*10670	*10670	*9240	*9240	*8220	*8220											*6110	*6110	10.05	
10.5 m	Stabilizers up					*10700	10010	9110	6990	6730	5140	5130	3870									4620	3460	11.07	
	Stabilizers down					*10730	*10730	*9230	*9230	*8150	*8150	*7300	*7300									*5710	*5710	11.26	
9.0 m	Stabilizers up			*12530	*12530	*11040	9800	8980	6870	6670	5080	5140	3880	4010	2970							3990	2950	12.03	
	Stabilizers down			*12690	*12690	*11130	*11130	*9450	*9450	*8240	*8240	*7300	*7300	*6290	*6290							*5500	*5500	12.17	
7.5 m	Stabilizers up	*11300	*11300	*14280	*14280	*11690	9390	8710	6620	6520	4940	5070	3810	4020	2980							3590	2630	12.73	
	Stabilizers down	*11600	*11600	*14980	*14980	*11840	*11840	*9830	*9830	*8430	*8430	*7360	*7360	*6470	6410							*5400	*5400	12.83	
6.0 m	Stabilizers up			*16570	13570	11790	8780	8350	6270	6300	4730	4940	3690	3960	2920							3330	2410	13.23	
	Stabilizers down			*16920	*16920	*12730	*12730	*10280	*10280	*8650	*8650	*7450	*7450	*6460	6340							*5390	5360	13.30	
4.5 m	Stabilizers up					10990	8040	7910	5870	6050	4490	4790	3540	3880	2840	3180	2290					3160	2280	13.54	
	Stabilizers down					*13510	*13510	*10670	*10670	*8830	*8830	*7490	*7490	*6410	6250	*5300	5200					*5220	5150	13.58	
3.0 m	Stabilizers up					10240	7350	7500	5480	5790	4250	4630	3390	3790	2750	3150	2260					3080	2210	13.68	
	Stabilizers down					*13640	*13640	*10810	*10810	*8850	*8850	*7430	*7430	*6260	6150	*5060	*5060					*4850	*4850	13.69	
1.5 m	Stabilizers up					*8540	6890	7170	5170	5580	4050	4490	3260	3710	2670	3110	2230					3060	2190	13.65	
	Stabilizers down					*8190	*8190	*10530	*10530	*8630	*8630	*7180	*7180	*5960	*5960	*4610	*4610					*4440	*4440	13.63	
0.0 m	Stabilizers up					*7750	6660	6950	4970	5430	3910	4390	3160	3650	2620								3120	2230	13.45
	Stabilizers down					*7820	*7820	*9780	*9780	*8090	*8090	*6700	*6700	*5430	*5430								*3950	*3950	13.40
-1.5 m	Stabilizers up					*8580	6610	6860	4880	5350	3830	4340	3110	3630	2600										
	Stabilizers down					*8800	*8800	*8560	*8560	*7180	*7180	*5890	*5890	*4580	*4580										
-3.0 m	Stabilizers up							6860	4880	5340	3820	4340	3110												
	Stabilizers down									*5850	*5850														

# Standard Equipment

Standard equipment may vary. Consult your Caterpillar dealer for specifics.

## Electrical

24 V electric starting  
65 A alternator  
Warning horn  
Working lights (5)  
boom (1), stick (1), cab frame (1), genset box (1)

## Operator Environment

12 V/7 A power supply for radio and multipurpose socket  
Adjustable pilot operated joystick type (wrist lever) controls  
each with 3 on/off buttons and 1 sliding switch  
Alternate exit: hammer to break rear window glass  
Ashtray with lighter  
Automatic climate control with bi-level air conditioner,  
heater and defroster  
Beverage holder  
Bolt-on FOGS capability  
EU Sound criteria package  
Floor mat  
Interior lighting and coat hook  
Instrumental panel and gauges  
Heavy Lift mode selection  
Monitor  
Full graphic and full color display with language capability  
Warning information, filter and fluid change information  
Working hour information  
Machine condition, error code and tool mode setting  
information  
Start up level check for hydraulic oil, engine oil and  
engine coolant  
Neutral lever lockout for all controls  
Parking brake  
Polycarbonate skylight  
Positive filtered ventilation (pressurized cab)  
Radio mounting (DIN), with antenna and mounting for two  
stereo speakers  
Rear window, emergency exit  
Sliding door window  
Storage compartment suitable for lunch box  
Sun shade for skylight and front windshield  
Tilttable steering column  
Travel control pedals  
Windshield wiper (parallel type) and washers  
Wiring provision for electrical seat heating and rotating beacon

## Engine

Automatic engine speed control with one-touch low idle  
switch  
Caterpillar C7 diesel engine (140 kW)  
Stage IIIA emission  
Altitude capability to 2300 m  
Caterpillar extended life coolant  
Fuel economy mode  
Fuel filter  
High ambient cooling system  
Muffler

Secondary engine shut-off switch  
Side-by-side cooling system with  
separately mounted AC condenser  
Water separator in fuel line

## Undercarriage

Creeper speed  
Exclusive 3 position transmission braking controls  
Four wheel hydrostatic drive with on-the-go shifting  
Four independent or simultaneously controlled hydraulic  
stabilizers with single axis float pad  
Fully hydraulic braking system  
Hydraulic maximum speed limiter  
Internal oil disk brakes  
Lockable oscillating axle  
Tires  
Four Dual 12.00-20 solid rubber tires on M325D MH  
Four 16.00-25 single solid rubber tires on M325D LMH  
Toolbox, left hand  
Two speed hydrostatic transmission  
Two wheel steer  
Wide steps on both sides

## Other Standard Equipment

Automatic swing parking brake  
Boom and stick regeneration circuit  
Capability to add auxiliary valve and attachment hydraulic  
pump and controls.  
Cat Data Link  
Cat 2600 mm hydraulically adjustable cab riser  
Counterweight Material Handling  
Counterweight with lifting eyes  
Cross-roller type swing bearing  
Doors and cab lock with Caterpillar one key security system  
Fine swing control  
Fire wall between pump compartment and engine  
Heavy duty upper structure with bottom guards  
Mirrors (frame right, cab left)  
Overheating protection system  
Separate hydraulic filter with re-useable metal tube for  
the filter element (no drop oil filter)  
S•O•S<sup>SM</sup> quick sampling valves for engine oil, hydraulic oil  
and coolant  
Sound suppression, meets EU sound level regulation  
2000/14/EC  
Travel alarm  
Wiring provisions for Cat Product Link

## Hydraulic System

High pressure grapples open-close hydraulic circuit  
High pressure lines with CVC Quick Disconnects (male)  
Hydraulic and electric circuits for:  
boom lowering check valves  
stick lowering check valves  
SmartBoom  
Medium pressure functions  
(hydraulic cab riser and grapple rotate)  
Medium pressure lines with CVC Quick Disconnects (male)

## Optional Equipment

Optional equipment may vary. Consult your Caterpillar dealer for specifics.

### Operator Compartment

Converter 12 V/7 A

Cover for storage compartment, suitable for a lunch box

Machine Security System with programmable keys

Radio

AM/FM radio mounted in right hand side console  
with antenna and speakers

Radio ready mounting rear location including  
24 V to 12 V converter

Seat

Adjustable high-back seat with air suspension

Adjustable high-back seat with mechanical suspension

Headrest

Visor Rain protector

Windshield

1-piece standard heavy duty

50/50 split, sliding

70/30 split, sliding

### Front Parts

M325D MH – 30 metric tons:

Boom, Material Handling 8850 mm

Stick, drop nose, Material Handling 6000 mm

Stick, drop nose, Material Handling 7420 mm

M325D LMH – 36 metric tons:

Boom, Material Handling, 8850 mm

Stick, straight, Material Handling, 5000 mm with additional  
pedal to control grapple open/close

Optional bucket linkage for straight stick, 5000 mm

Stick, drop nose, Material Handling, 6000 mm

Stick, drop nose, Material Handling, 7420 mm

### Undercarriage

Additional toolbox

On M325D MH

dual pneumatic tires 11.00-20

On M325D LMH

single pneumatic tires 23.5 R 25

### Miscellaneous Options

Antifreeze, -50°C

Beacon, rotating

Bio hydraulic oil package

Falling Object Guard, FOGS, bolt-on,  
with working lights

Lights, working, 2 front and 1 rear

Starting aid cold weather

Generator control circuit

Generator, 20 kW

# M325D MH and M325D LMH Wheeled Material Handlers

For more complete information on Cat products, dealer services, and industry solutions, visit us on the web at [www.cat.com](http://www.cat.com)

Materials and specifications are subject to change without notice. Featured machines in photos may include additional equipment. See your Caterpillar dealer for available options.

© 2007 Caterpillar -- All rights reserved

CAT, CATERPILLAR, their respective logos, "Caterpillar Yellow" and the POWER EDGE trade dress as well as corporate and product identity used herein, are trademarks of Caterpillar and may not be used without permission.

HEHH3414-1 (04/2007) hr

**CATERPILLAR**<sup>®</sup>